



# MONTHLY MEMBERSHIP PROGRESS REPORT

District 105BN

Results as of: 06/30/2019

GMT: JOOST PAIJMANS

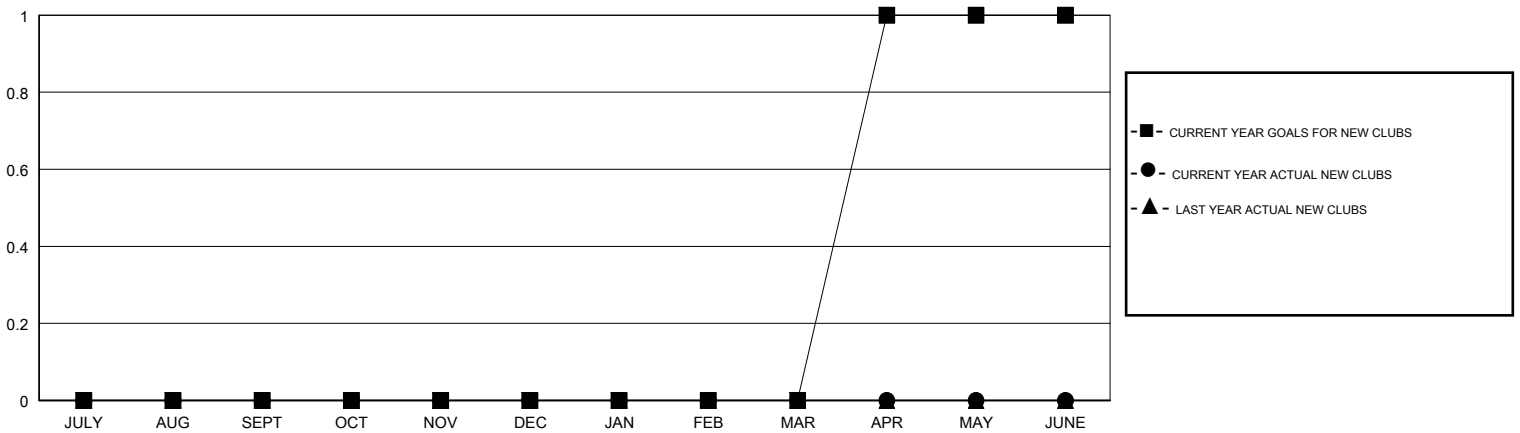
LOCATION ENGLAND

GMT CA

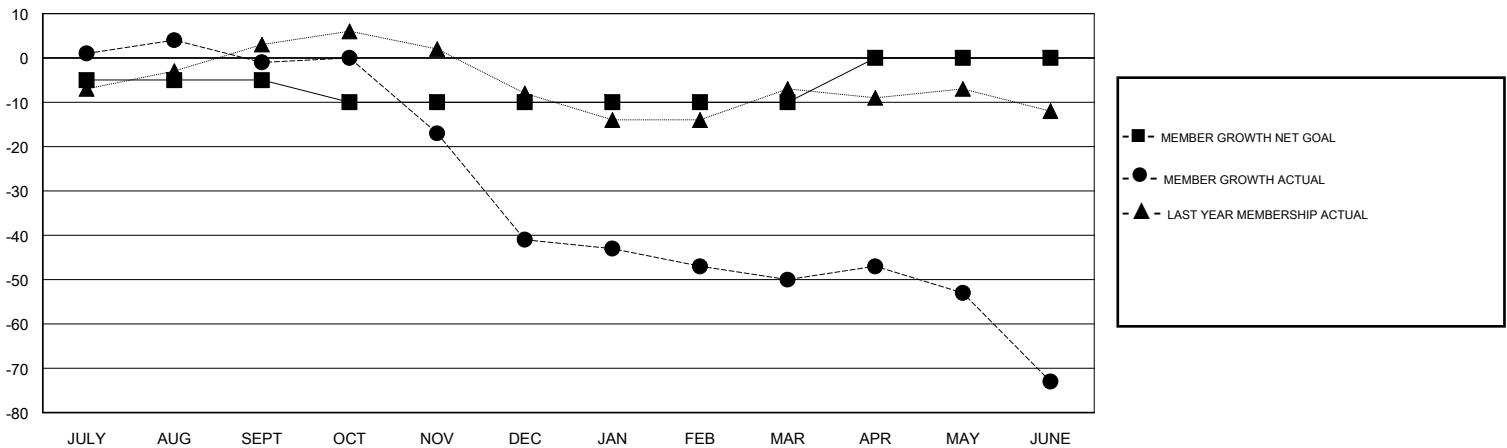
Clubs			
RESULTS FOR 2018-2019			
QUARTER	NEW CLUB GOAL	NEW CLUBS	DROPPED CLUBS
JULY/AUG/SEPT	0	0	0
OCT/NOV/DEC	0	0	3
JAN/FEB/MAR	0	0	1
APR/MAY/JUNE	1	0	1

Members			
RESULTS FOR 2018-2019			
QUARTER	MEMBER GROWTH NET GOAL	MEMBER GROWTH ACTUAL	DROPPED MEMBERS ACTUAL (including transfers)
JULY/AUG/SEPT	-5	18	18
OCT/NOV/DEC	-5	12	50
JAN/FEB/MAR	0	14	19
APR/MAY/JUNE	10	12	35

GOALS AND ACTUAL NEW CLUBS CUMULATIVE



GOALS AND ACTUAL MEMBERS CUMULATIVE



DROPPED CLUBS: 5

23 CLUBS OF 47 ADDED 1 OR MORE NEW MEMBERS

GENDER DISTRIBUTION

MALE 476 (70.21%)  
 FEMALE 202 (29.79%)  
 Women Percentage Fiscal Year Goal: 31%

DROPPED MEMBERS

DECEASED	14
CLUB CANCELLED	6
OTHER	102
<b>TOTAL</b>	<b>122</b>

[CLICK HERE FOR CUMULATIVE MEMBERSHIP DATA](#)

TOTAL FAMILY UNIT MEMBERS	142
FAMILY MEMBERS PAYING HALF DUES	75